

# CPV/CCV Ag

## General Information

**Purpose :** Detection of Canine Parvo virus and Corona virus antigen

**Principle :** Immunochromatographic assay

**Specimen :** Canine feces

**Materials provided :**

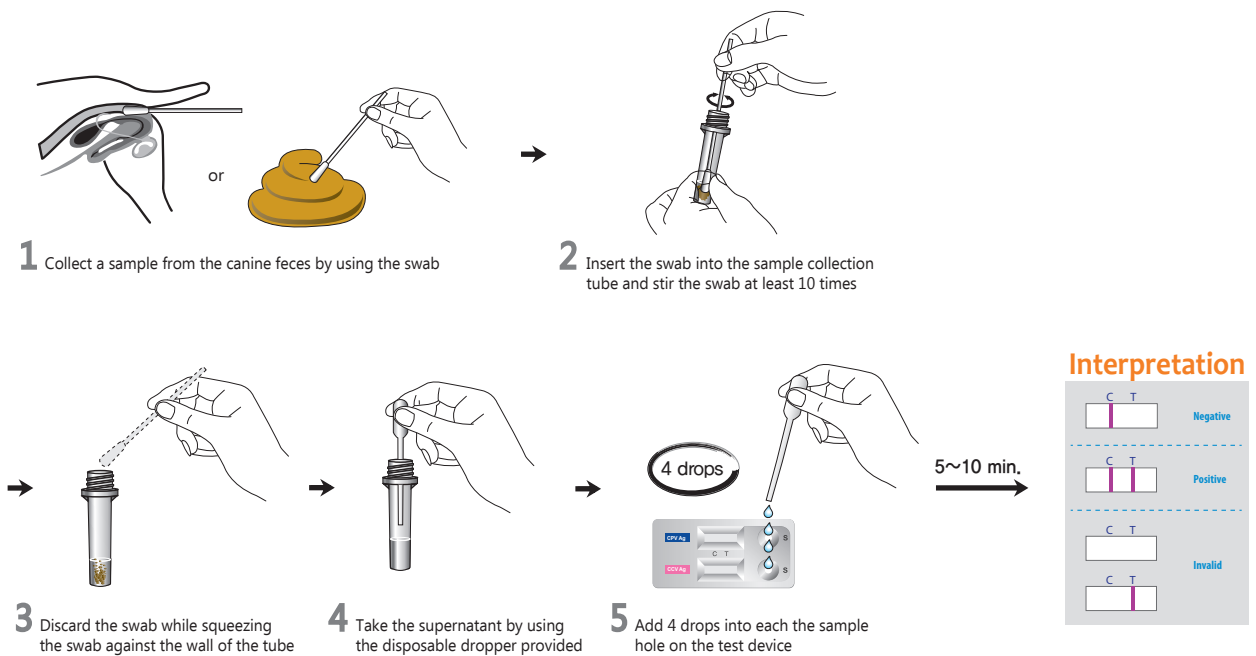
- Anigen Rapid CPV/CCV test device
- Sample collection tube containing assay diluents
- Disposable swab
- Disposable dropper

**Special Features :**

- Simultaneous detection of CPV and CCV with one specimen preparation
- One-step testing procedure : Quick & Accurate
- High sensitivity and specificity



## Test Procedure



## Ordering Information

Cat. No.	Description	Type	Pack size
RG11-05	CPV/CCV Ag	Dual Device	10 Tests/Kit